

# Osborn Buffing Brushes

Osborn Buffing Brushes are excellent tools to help prepare the surface before the first coat of finish. They consist of nylon bristles impregnated with particles of silicon carbide which act as an abrasive. However, as their name implies, they are buffing brushes, not sanding brushes. So what's the difference? Sandpaper and sanding disks are designed to remove the top layer of wood whereas Osborn Buffing Brushes are designed to smooth the surface of the wood without removing the entire top layer.

Osborn Brushes require a buffer or polisher with 5/8 x 11 National Coarse (NC) threads. Although a constant speed buffer of around 1800 RPM will work, one with a variable speed is much easier to use and will do a better job.

So what are some applications for the use of Osborn Brushes?

1. When the surface has been stripped or pressure washed and you want to remove any feathering that may have occurred.
2. If the grain of the wood has been raised due to contact with water (mostly interior situations).
3. To remove mill glaze on interior and exterior wood surfaces.
4. To even out the texture of hewn surfaces since the flexible bristles reach the hills and valleys.
5. If a home has been blasted the use of an Osborn Brush can help reduce rough texture of the surface.

What are Osborn Brushes not suitable for?

1. To make a blasted surface completely smooth again.
2. To remove a finish.
3. To remove discolorations that go deep into the wood.

Osborn brushes are not an alternative to sandpaper or sanding disks. Sanders and sanding disks consist of rough, flat surfaces and will remove more wood on high spots than in depressions whereas Osborn Brushes pretty well follow the contour of the surface. What happens if you try to use an Osborn Brush to sand wood surfaces? To correctly use an Osborn brush you never need apply much pressure to the buffer, just holding it in place takes enough effort.

We carry four different Osborn Brushes. For logs and log siding, we recommend using the flared 6" diameter brushes since they do a good job and are easy to use. The 4" brushes may be used for small or tight areas.



## Tool Required

Buffer or polisher with 5/8x11 National Course (NC) threads. Best speed is around 1800 RPM but variable speed is handy.

*Pictured - Makita 9227C Sander - Polisher.*

## Osborn Buffing Brushes



Cup Brush 4"  
80 grit  
#32148  
**OB4-80**



Cup Brush 4"  
120 grit  
#32149  
**OB4-120**



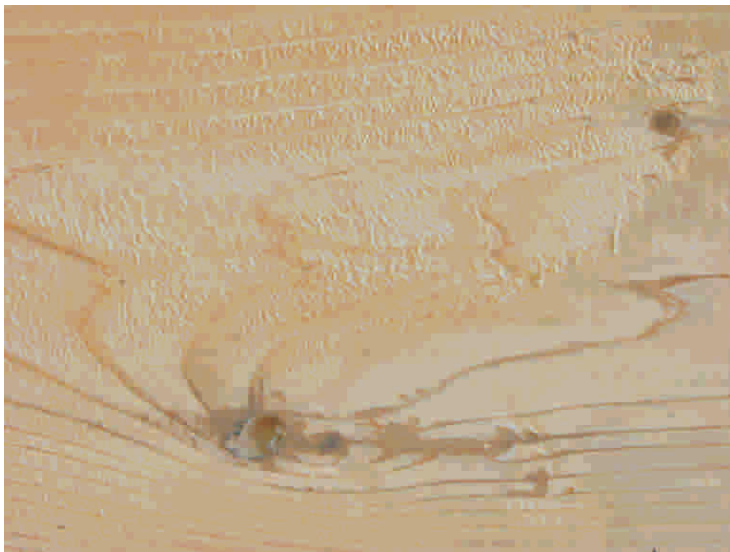
Cup Brush 6"  
80 grit  
#32132  
**OB6 80**



Cup Brush 6"  
120 grit  
#32131



Osborn Brush in use



Feathered surface



Same surface after brushing